

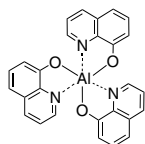
## Aggregation-induced emission (AIE)

AIE materials have been applied to many areas including OLED, optical waveguide, chemosensor and bio-probe. Our Aggregation-Induced Emission (AIE) Materials portfolio delivers products and services in academic, industrial and bioscience...etc.

### Aggregation-induced emission (AIE)

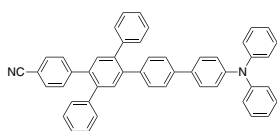
**LT-E401 Alq3**

2085-33-8, Sublimed >99.5%



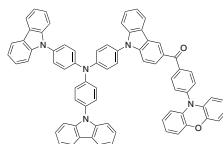
**LT-N4201 CN-TPB-TPA**

2408719-17-3, Sublimed >99%



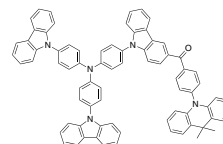
**LT-N4219 TCTA-BP-PXZ**

2378607-56-6, Sublimed >99%



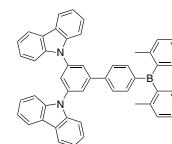
**LT-N4220 TCTA-BP-DMAC**

2378607-57-7, Sublimed >99%



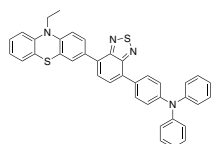
**LT-N4224 DB-BCZ**

2570405-56-8, Sublimed >99%



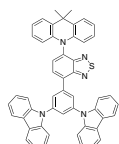
**LT-N4225 PBTPA**

2567594-79-8, Sublimed >99%



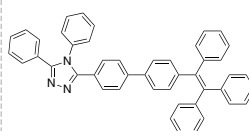
**LT-N4226 BCZ-BTD-AD**

Sublimed >99%



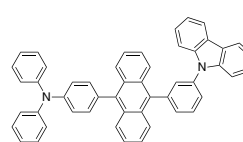
**LT-N4227 TPETAZ**

2641369-36-8, Sublimed >99%



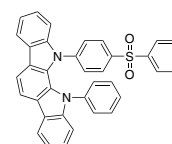
**LT-N4228 TPA-An-mPhCz**

Sublimed >99%



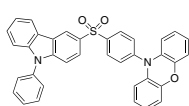
**LT-N4229 ICz-DPS**

2217606-00-1, Sublimed >99%



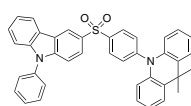
**LT-N4231 3CP-DPS-PXZ**

2486150-45-0, Sublimed >99%



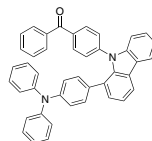
**LT-N4232 3CP-DPS-DMAC**

2486150-46-1, Sublimed >99%



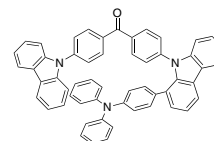
**LT-N4233 1TCPM**

2644017-39-8, Sublimed >99%



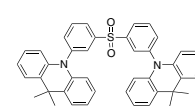
**LT-N4234 1TCPM-Cz**

2644017-42-3, Sublimed >99%



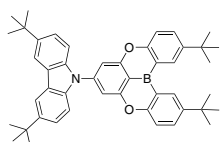
**LT-N6044 m-ACS02**

1477512-43-8, Sublimed >99%



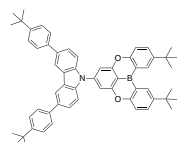
**LT-N6080 TB-tCz**

Sublimed >99%



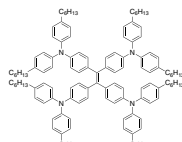
**LT-N6081 TB-tPCz**

Sublimed >99%



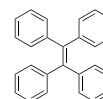
**LT-S9501**

>99%(NMR)



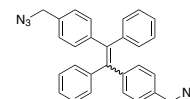
**K0971**

632-51-9, >98%



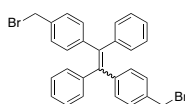
**K1710 TPE-MN3**

1054451-33-0



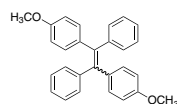
**K1711 TPE-MB**

1053241-67-0, >97%



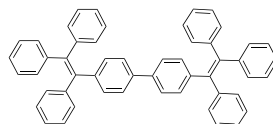
**K1712 TPE-Ome**

68578-78-9, >97%



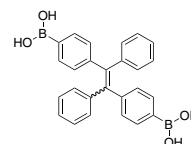
**K1713 BTPE**

158605-06-2, >98%



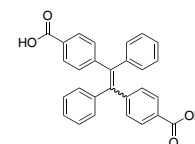
**K1714 TPE-BA**

1054451-31-8, >96%



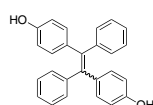
**K1715 TPE-CA**

1002339-79-8, >98%



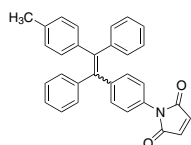
**K1716 TPE-DOH**

68578-79-0, >97%



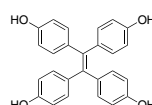
**K1717 TPE-Thiol**

1245606-71-6, >98%



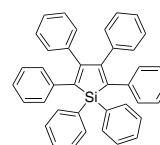
**K1718 TPE-TOH**

119301-59-6, >98%



**K1719 HPS**

752-28-3, >98%



**K1720 TPE-Sulfonate**

953792-48-8,

